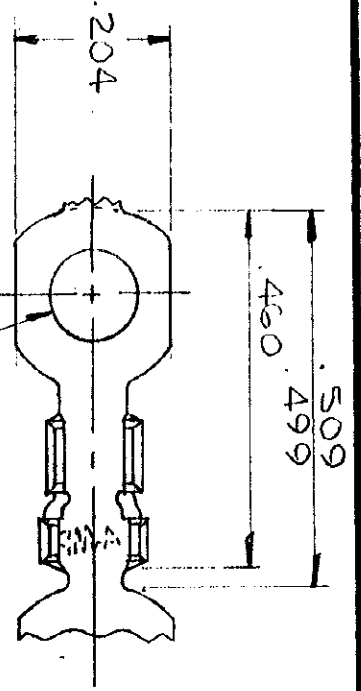
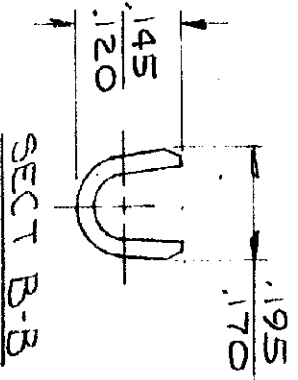
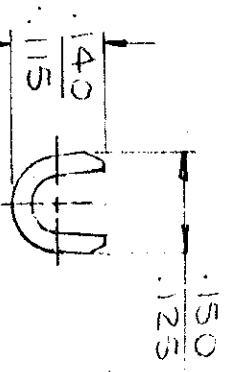
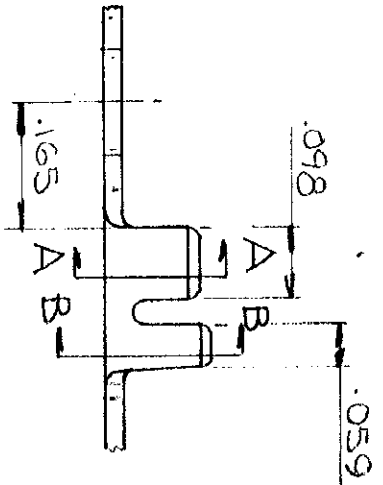


NUMBER
42065



HOLE DIA.
(SEE TABLE)



CONTINUOUS STRIP, ON REELS

WIRE SIZE AWG	INSULATION RANGE	STUD #	HOLE DIA. F.003	MATERIAL AND FINISH	TERMINAL NUMBER
20-16	.075-.110	—	.099	.025 BRASS - NONE	42065-0
			.119	.025 BRASS - NONE	42065-1
			.125	.025 BRASS - NONE	42065-2
			.099	.025 BRASS - TIN	42065-3
			.119	.025 BRASS - TIN	42065-4
			.125	.025 BRASS - TIN	42065-5
					OBsolete

DIMENSIONS IN INCHES. DO NOT SCALE PRINT.

©1964 BY AMP INCORPORATED. ALL RIGHTS RESERVED. AMP PRODUCTS COVERED BY PATENTS AND/OR PATENTS PENDING.

CUSTOMER COPY
REFERENCE ONLY



REV	DESCRIPTION	DATE	CHK	DR
J	085-2 AF-3714	7/15/68	5/1	5/15/68
H	085-1 Per AF-3713	6/14/67	4/1	6/14/67
G	085-3-4 AF	1/5/64	3/6	7/10/66
F	OBsolete 42065-5	5/21/68	3/8	5/21/68
E	REVISED A-3467	1/17/71	3/1	1/17/71
D	REV. INSUL. BARREL	1/15/68	3/2	1/15/68
C	REDRAWN & REVISED	1/15/68	3/1	1/15/68
INTR	REVISION RECORD			

WIRE RANGE — INSULATION

TOLERANCE EXCEPT AS NOTED ± 1% OR

SCALE 4-1

LOG A

NO 42065

REV J

AMP 1252 REV 7/60

RINGS